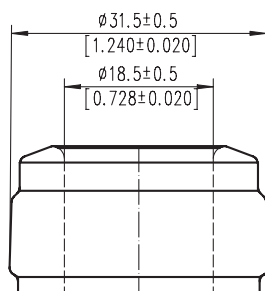


MASILVA USA  
**SEMERU**  
 Technical Guide



**Cork Closure Recommendations**  
 UF 24mm x 45mm

<b>Weight</b>	<b>600 ± 25g</b>
<b>Height</b>	<b>296 ± 1.8mm</b>
<b>Body Ø</b>	<b>82.4 ± 1.6mm</b>
<b>Finish</b>	<b>31.5 ± 0.5mm</b>
<b>Label</b>	<b>85mm (height) 86.3 ± 1.6mm (width)</b>

